

#74 6001 Promontory Road Chilliwack, BC



SOLD ON CHILLIWACK

Kelly Lerigny REALTOR®

KELLY LERIGNY

RE/MAX Nyda Realty

Cell: 604-703-5564

Office: 604-858-7179

kelly@soldonchilliwack.com

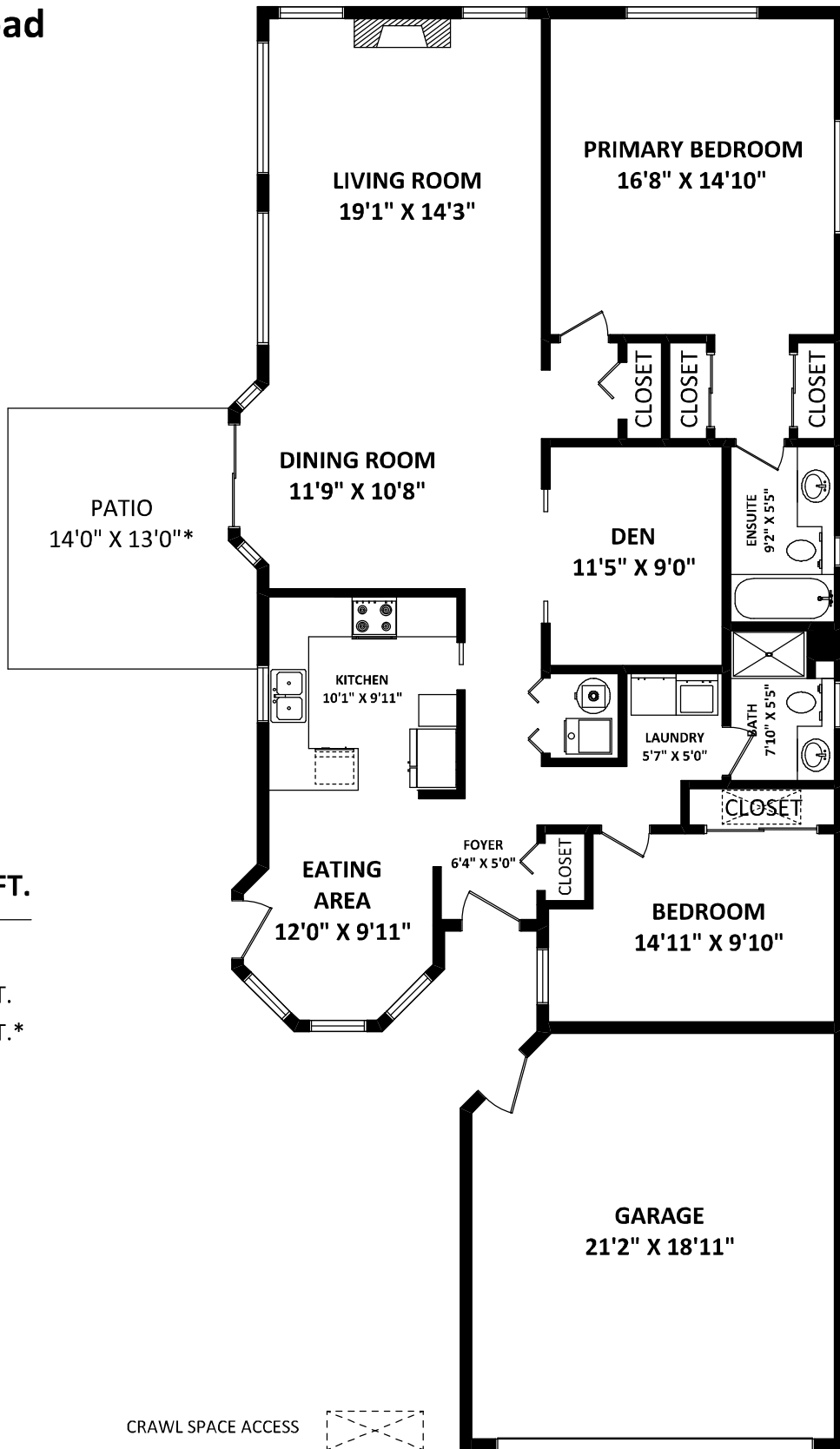
soldonchilliwack.com

TOTAL FINISHED AREA: 1627 SQ.FT.

OTHER AREA(S)

GARAGE: 429 SQ.FT.

PATIO: 165 SQ.FT.*



[DECEMBER 9, 2022]



TEL: 604-575-1244

www.seevirtual360.com

DISCLAIMERS:

1. MEASUREMENTS ARE FOR PROMOTIONAL USE ONLY & ARE NOT INTENDED FOR CONSTRUCTION USE. ROOM DIMENSIONS ARE APPROXIMATE. MEASUREMENTS & CALCULATIONS FOR FINISHED AREAS ARE E&O INSURED.
2. FINISHED AREAS ARE ENCLOSED AREAS IN A HOUSE THAT ARE SUITABLE FOR YEAR-ROUND USE, EMBODYING WALLS, FLOORS, AND CEILINGS THAT ARE SIMILAR TO THE REST OF THE HOUSE. (ANSI Z765-2013)
3. FOR DETACHED SINGLE-FAMILY HOUSES, THE FINISHED SQUARE FOOTAGE OF EACH LEVEL IS CALCULATED TO THE EXTERIOR FINISHED SURFACE OF THE OUTSIDE WALLS. (ANSI Z765-2013)
4. THIS FLOOR PLAN MAY ONLY BE REPRODUCED WITH PERMISSION OF THE REALTOR(S) ON THIS FLOOR PLAN.

* ANY MEASUREMENTS WITH AN ASTERISK (*) OR (APPROX) ARE APPROXIMATE AND FOR ILLUSTRATION PURPOSES ONLY AND ARE NOT E&O INSURED.

