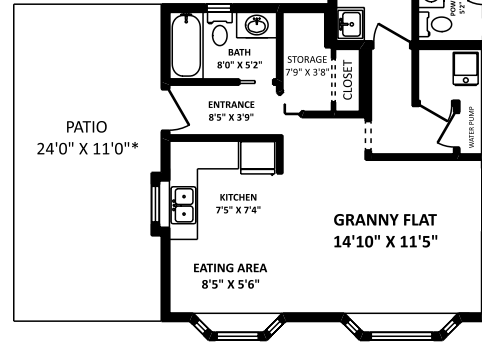
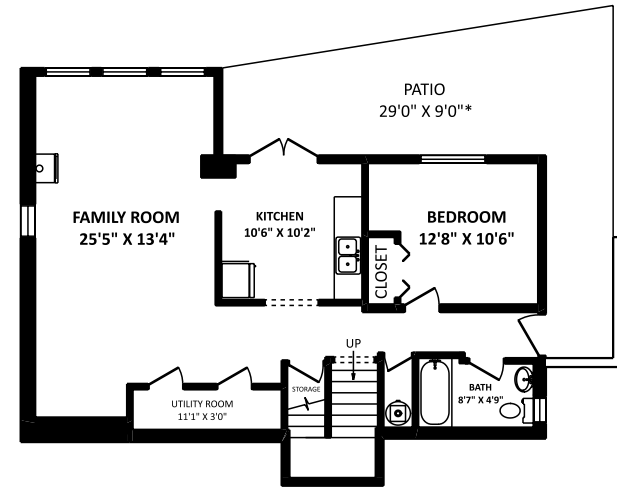
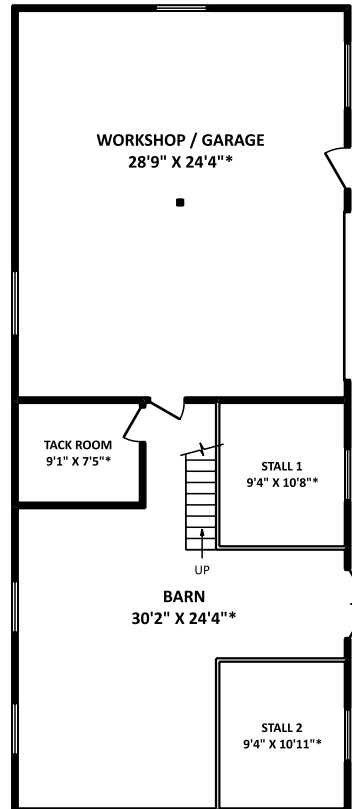


**UPPER FLOOR: 1147 SQ.FT.\*\***

\*\*INCLUDES 136 SQ.FT. OF LOW CEILING AREA(S), BOUND BY DOTTED LINES.



**MAIN FLOOR: 1520 SQ.FT.**



**LOWER FLOOR: 953 SQ.FT.**

INCLUDES UTILITY ROOM

**TOTAL FLOOR AREA: 3620 SQ.FT.\*\***

**OTHER AREA(S)**

WORKSHOP/GARAGE:	739 SQ.FT.*
DECK(S):	462 SQ.FT.*
PATIO(S):	525 SQ.FT.*
BARN:	1555 SQ.FT.*

\*\*INCLUDES 136 SQ.FT. OF LOW CEILING AREA(S), BOUND BY DOTTED LINES.

APRIL 12, 2023



TEL 604-575-1244  
 www.seevirtual360.com

**DISCLAIMERS:**

1. MEASUREMENTS ARE FOR PROMOTIONAL USE ONLY & ARE NOT INTENDED FOR CONSTRUCTION USE. ROOM DIMENSIONS ARE APPROXIMATE. MEASUREMENTS & CALCULATIONS FOR FINISHED AREAS ARE E&O INSURED.
  2. FINISHED AREAS ARE ENCLOSED AREAS IN A HOUSE THAT ARE SUITABLE FOR YEAR-ROUND USE, EMBODYING WALLS, FLOORS, AND CEILINGS THAT ARE SIMILAR TO THE REST OF THE HOUSE. (ANSI 2765-2013)
  3. FOR DETACHED SINGLE-FAMILY HOUSES, THE FINISHED SQUARE FOOTAGE OF EACH LEVEL IS CALCULATED TO THE EXTERIOR FINISHED SURFACE OF THE OUTSIDE WALLS. (ANSI 2765-2013)
  4. THIS FLOOR PLAN MAY ONLY BE REPRODUCED WITH PERMISSION OF THE REALTOR(S) ON THIS FLOOR PLAN.
- \* ANY MEASUREMENTS WITH AN ASTERISK (\*) OR (APPROX) ARE APPROXIMATE AND FOR ILLUSTRATION PURPOSES ONLY AND ARE NOT E&O INSURED.

